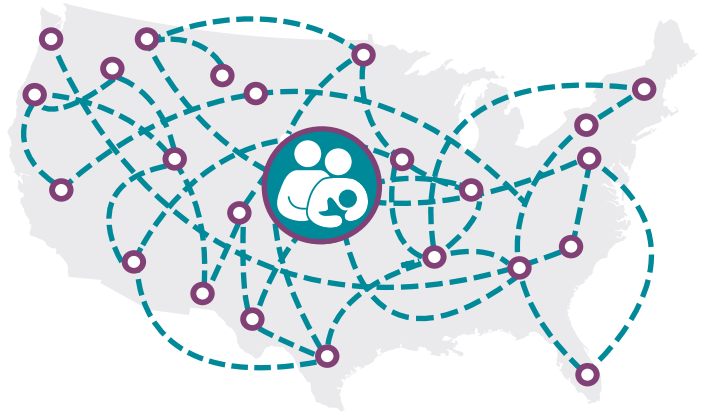


Project Overview

NACCHO and USBC convened the CoC constellation of 100 professionals to develop a community wide approach to lactation support. The blueprint specifically seeks to:

- Establish a lactation safety net to improve community health
- Ensure families are fully supported throughout the first 1,000 days
- Address racial and ethnic inequities in chest/breastfeeding
- Develop a CoC model for local chest/breastfeeding support



CoC in Breastfeeding: Continuous, Coordinated, Consistency in Supportive Environments

Continuity of Care refers to seamless and collaborative delivery of healthcare across different providers and settings

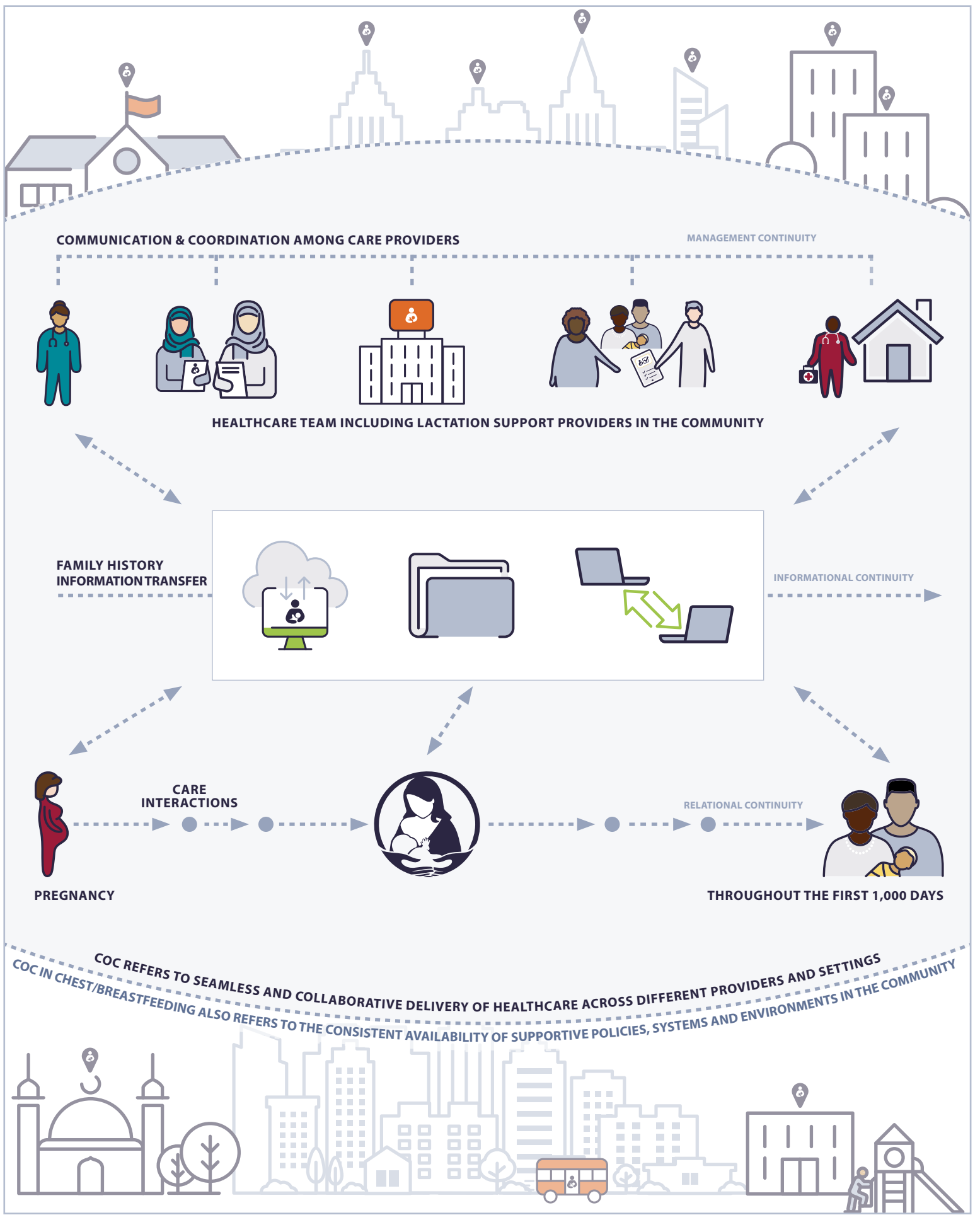


Illustration adapted from Primary Health Care Performance Initiative (2019)

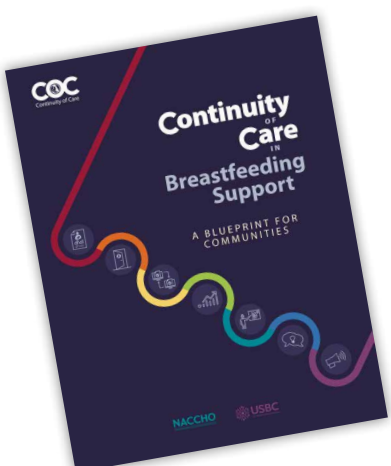
Recommendations to Advance Chest/Breastfeeding Continuity of Care in the Community

Community Infrastructure Recommendations

- 1 Breastfeeding as a Community Health Improvement Strategy**
- 2 Breastfeeding Policies, Systems and Environmental Changes**
- 3 Transfer of Care Accountability & Referral Systems**
- 4 Community-Driven Chest/Breastfeeding Data System**

Lactation Workforce Capacity

- 5 Public Health, Allied Health and Healthcare Workforce Education**
- 6 Family-Centered Care, Implicit Bias Awareness & Cultural Humility Approach**
- 7 Health Advocacy and the Local Breastfeeding Champion Role**



Take Action in Your Community!

The blueprint launched in August 2021 during National Breastfeeding Month. Together, we can improve overall community health and advance breastfeeding equity through Continuity of Care in breastfeeding support.

Download the blueprint at <http://www.breastfeedingcontinuityofcare.org/blueprint>

Build up the national repository with additional and new resources <http://www.breastfeedingcontinuityofcare.org>